

# Census of South Australian Vertebrates

2009



*A list including all species of vertebrate animals reliably reported to have occurred in South Australia as free-living forms during the period of European settlement of the State.*



Government of South Australia  
Department of Environment,  
Water and Natural Resources



South  
Australian  
Museum

- Edited by:** Helen Owens and Andrew Graham, Science Resource Centre,  
South Australian Department of Environment, Water and Natural Resources  
GPO Box 1047, Adelaide, SA, 5001
- Executive Committee:** Mark Hutchinson and Robert Morris, South Australian Museum,  
North Terrace, Adelaide, SA 5000  
  
Stuart Pillman, Science Resource Centre,  
South Australian Department of Environment and Natural Resources  
GPO Box 1047, Adelaide, SA, 5001
- GIS Support:** Roman Urban, Science Resource Centre,  
South Australian Department of Environment and Natural Resources  
GPO Box 1047, Adelaide, SA, 5001
- Contributions by:** Dave Armstrong, Kirsty Bevan, Andrew Black, Brian Blaylock, Graham Carpenter, Jane Cooper, Ralph Foster, Kate Graham, Nerissa Haby, Michael Hammer, Phillippa Horton, Mark Hutchinson, Carolyn Kovach, Cath Kemper, Peter Lang, Peter Mahoney, Matt McDowell, Graham Medlin, Nick Neagle, Darren Niejalke, Lynn Pedler, Maya Penck, Stuart Pillman, Terry Reardon, Meg Robertson, Tony Robinson, Ellen Ryan-Colton, Peter Shaughnessy, David Stemmer, Hafiz Stewart, Dave Thompson, Tonja Wright.
- Front Cover Photography:** Dave Armstrong, Michael Hammer, Peter Canty, Peter Lang, Tony Robinson.
- Publication may be cited:** Owens, H. and Graham, A. (eds.) (2009) Census of South Australian Vertebrates. (Department of Environment and Natural Resources, South Australia and South Australian Museum.) eBook (*insert date of last update*).
- URL:** [http://www.environment.sa.gov.au/Science/Information\\_data/Census\\_of\\_SA\\_vertebrates](http://www.environment.sa.gov.au/Science/Information_data/Census_of_SA_vertebrates)
- ISBN:** 978-1-921466-27-4

# Contents

<b>Introduction</b> .....	<b>SECTION 1</b>
<b>Methods</b> .....	<b>SECTION 1</b>
<b>Mammals</b> .....	<b>SECTION 2</b>
<b>Taxonomy</b>	
<b>Distribution Maps</b>	
<b>Birds</b> .....	<b>SECTION 3</b>
<b>Taxonomy</b>	
<b>Distribution Maps</b> .....	<i>in preparation</i>
<b>Reptiles</b> .....	<b>SECTION 4</b>
<b>Taxonomy</b>	
<b>Distribution Maps</b>	
<b>Amphibians</b> .....	<b>SECTION 5</b>
<b>Taxonomy</b>	
<b>Distribution Maps</b>	
<b>Freshwater Fishes</b> .....	<b>SECTION 6</b>
<b>Taxonomy</b> .....	<i>in preparation</i>
<b>Distribution Maps</b> .....	<i>in preparation</i>
<b>Species Number Index</b> .....	<b>SECTION 7</b>



# Introduction *(last update October 2013)*

This list includes all species of vertebrate animals reliably reported to have occurred in South Australia as free-living forms during the period of European settlement of the State. It has been prepared from a variety of published sources, the major ones of which are cited in the various sections. Distribution maps have been based on specimens from the collections of the South Australian Museum and datasets vetted by expert panels that are stored in the Biological Databases of South Australia (BDBSA) within the Department of Environment, Water and Natural Resources (DEWNR). A substantial number of datasets have been captured since the last edition was published resulting in an improved representation of species distribution within the state. The major datasets included in the BDBSA are outlined in the Methods section. Although it is not possible to list all the datasets that have contributed to the maps, we are grateful to all contributors and acknowledge the significance of each record.

The list is now in its fourth edition following Aslin (1985), Watts (1990) and Robinson, Casperson and Hutchinson (2000) which were all published under the name "A List of the Vertebrates of South Australia". This fourth edition has been developed as a web-based product which will allow more regular updates of each taxa as more data becomes available. Users are encouraged to print the whole document or the relevant sections if they require a hard copy.

The order in which the vertebrate groups are presented is as follows:

1. Mammals
2. Birds
3. Reptiles
4. Amphibians
5. Freshwater Fishes

Each Taxa will be published on the web as it is finalised and updates will be included on a regular basis as they become available. The date of the last update will be provided at the beginning of each taxa group.

Each section contains the following items of information for each currently recognised species:

1. Order
2. Family
3. Notation for an introduced species (an asterisk)
4. Genus
5. Species

6. Author and date of publication of specific description
7. Common name
8. Threatened status in Australia; following AU:
9. Threatened status in South Australia; following SA:
10. A distribution map.

When relevant, higher taxonomic levels have been included to match the most recent published guides.

The sequence in which orders are listed is determined by the conventions for each of the various groups. Within orders (and sub-orders for mammals), families are listed in the sequence used in the most recent guides. Within families (or sub-families in some cases), genera and species are listed alphabetically.

The only introduced species (ie. alien to South Australia) included are those which are believed to have established true feral populations. In the case of a few freshwater fish, these feral populations are only maintained by regular re-introductions.

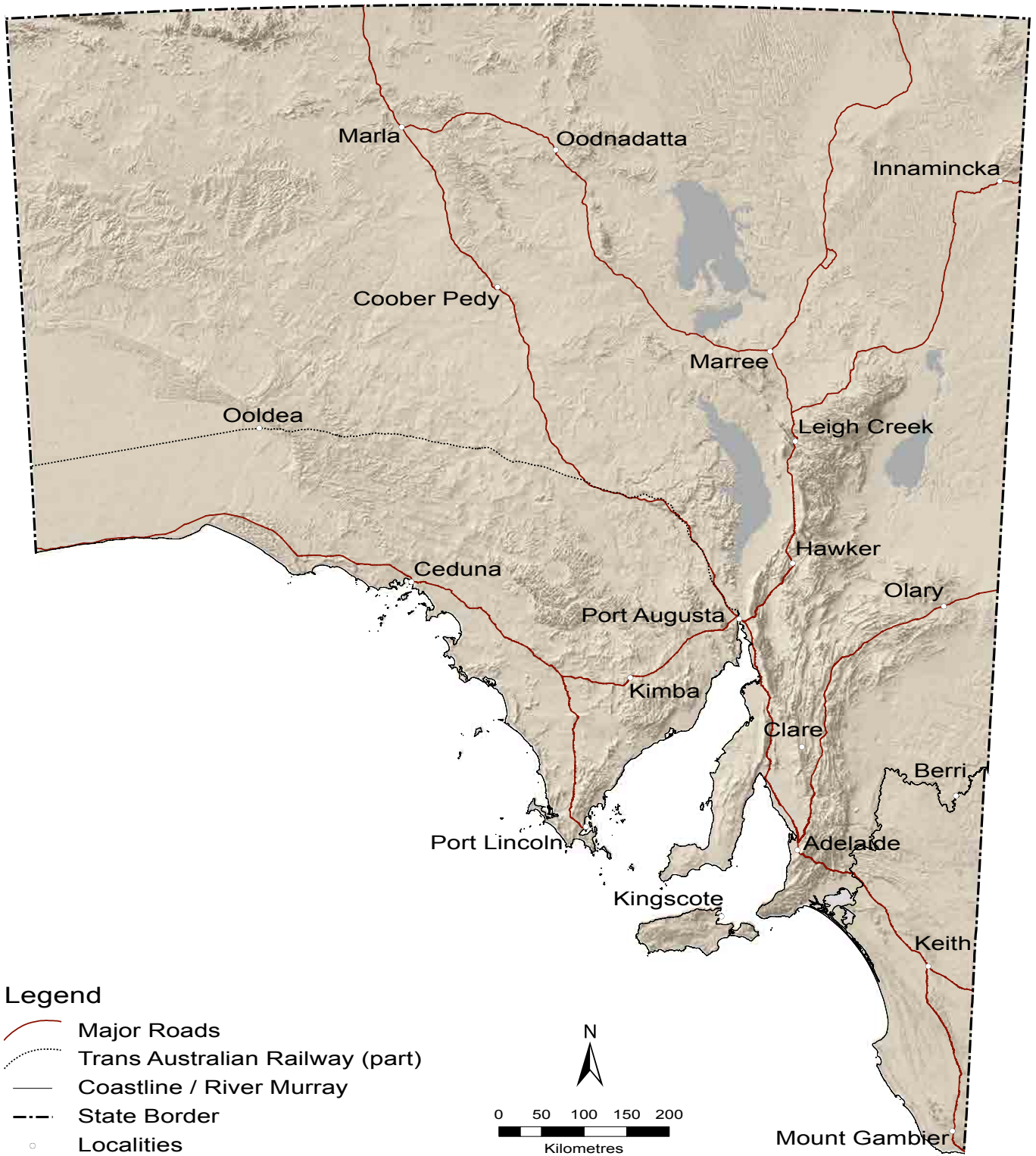
This publication is intended as a reference source for current taxonomy and observed locations within South Australia at the time of publication. It should be borne in mind that taxonomic changes are continually being made and new distributional information is accumulating, so that no listing can be completely up to date. This list will be revised and updated on an ongoing basis. Any taxonomic queries should be directed to the relevant curator or collection manager at the South Australian Museum. Any errors can be directed to the Science Resource Centre, Department of Environment and Natural Resources or via email (DEWNRBioDataSupport@sa.gov.au).

## References

Aslin, H. J. (ed.) (1985) *A List of the Vertebrates of South Australia. 1<sup>st</sup> Edition*. Biological Survey Coordinating Committee and the Department of Environment and Planning, South Australia.

Robinson, A.C. , Casperson, K.D. and Hutchinson, M.N. (eds.) (2000) *A List of the Vertebrates of South Australia. 3<sup>rd</sup> edition*. Department for Environment and Heritage, South Australia

Watts, C. H. S. (ed.) (1990) *A List of the Vertebrates of South Australia 2<sup>nd</sup> Edition*. Biological Survey Coordinating Committee and the Department of Environment and Planning, South Australia.



# Methods *(last update October 2013)*

The method for producing the 4<sup>th</sup> edition of the Vertebrate Census was completely revised to take advantage of new technology and allow for a more automated generation of lists and maps. This new process combined with making each vertebrate group section in a 'stand alone' format will allow for more frequent updates to be produced and refreshed on the website.

## Distribution Maps

Many new datasets from around South Australia were collated for the production of the Census maps and loaded into the Biological Database of South Australia (BDBSA). Maps for all vertebrate groups were produced direct from BDBSA. Draft maps were vetted by appropriate state authorities prior to final production.

Each symbol on the map represents at least one record in that location for the species. Squares represent records since the beginning of 1970 and triangles represent records prior to 1970. Solid symbols represent records of vouchered specimens and hollow symbols represent sighting records (ie: non-vouchered). When subfossils are included their symbology will be explained at the front of the relevant section.

The main datasets included in production of maps for each vertebrate group are listed below. Some of these datasets have been loaded over recent years and may not include all records up to the date of the Census publication. They will be refreshed and updated in due course and be displayed in the Census maps as they become available.

The base map that is used throughout the census is provided (left) with legend and major towns.

## Mammals

- South Australian Museum (Incl. subfossils and cetacean sightings datasets)
- Biological Survey of South Australia, DEWNR
- SA Threatened species data, DEWNR
- Mammal Club of SA – Field Naturalist Society

## Birds

- South Australian Museum
- Biological Survey of South Australia, DEWNR
- SA Threatened species data, DEWNR
- Birds SA
- BirdLife Australia
- Australasian Waders Study Group

## Reptiles

- South Australian Museum
- Biological Survey of South Australia, DEWNR
- SA Threatened species data, DEWNR
- South Australian Herpetology Group

## Amphibians

- South Australian Museum
- Biological Survey of South Australia, DEWNR
- SA Threatened species data, DEWNR
- South Australian Herpetology Group
- South Australian Frog Census

## Fish

- South Australian Museum
- others to be finalised

All doubtful and incomplete records were filtered from BDBSA prior to mapping. In addition all records with a coordinate reliability > 25km (specimens) and >10km (sightings) were also excluded.

## Threatened Species Categories

When applicable, threatened species status codes have been included in the list.

Where a species itself is not threatened but a sub-species is, "ssp" is used as a flag. Clarification is provided as an annotation to the relevant species.

Those preceded by **AU**: are the Australian status codes as listed in the Environment Protection and Biodiversity Conservation Act 1999 (EPBC Act). The website address for this Act is:

[www.environment.gov.au/cgi-bin/sprat/public/publicthreatenedlist.pl?wanted=fauna](http://www.environment.gov.au/cgi-bin/sprat/public/publicthreatenedlist.pl?wanted=fauna).

EPBC Act status codes can be interpreted as follows:

**EX Extinct**

**CR Critically Endangered**

**EN Endangered**

**VU Vulnerable**

A more detailed interpretation of these codes and criteria used for determining them is available from the Threatened Species Nomination Form on the EPBC Act website.

Those preceded by **SA:** are the South Australian status codes and come from Schedules 7, 8 and 9 (revised 2008) in the National Parks and Wildlife Act 1972. The website for this Act is:

**[www.legislation.sa.gov.au/LZ/C/A/NATIONAL%20PARKS%20AND%20WILDLIFE%20ACT%201972/CURRENT/1972.56.UN.PDF#page=92](http://www.legislation.sa.gov.au/LZ/C/A/NATIONAL%20PARKS%20AND%20WILDLIFE%20ACT%201972/CURRENT/1972.56.UN.PDF#page=92)**.

South Australian status codes are defined as follows:

**E Endangered**

**V Vulnerable**

**R Rare**

A more detailed interpretation of these codes and criteria used for determining them is available from the following publication:

Department for Environment and Heritage (2003) Review of the Status of Threatened Species in South Australia: Proposed Schedules under the South Australian National Parks and Wildlife Act 1972; Discussion Paper. National Parks and Wildlife Council in partnership with the Department for Environment and Heritage.



