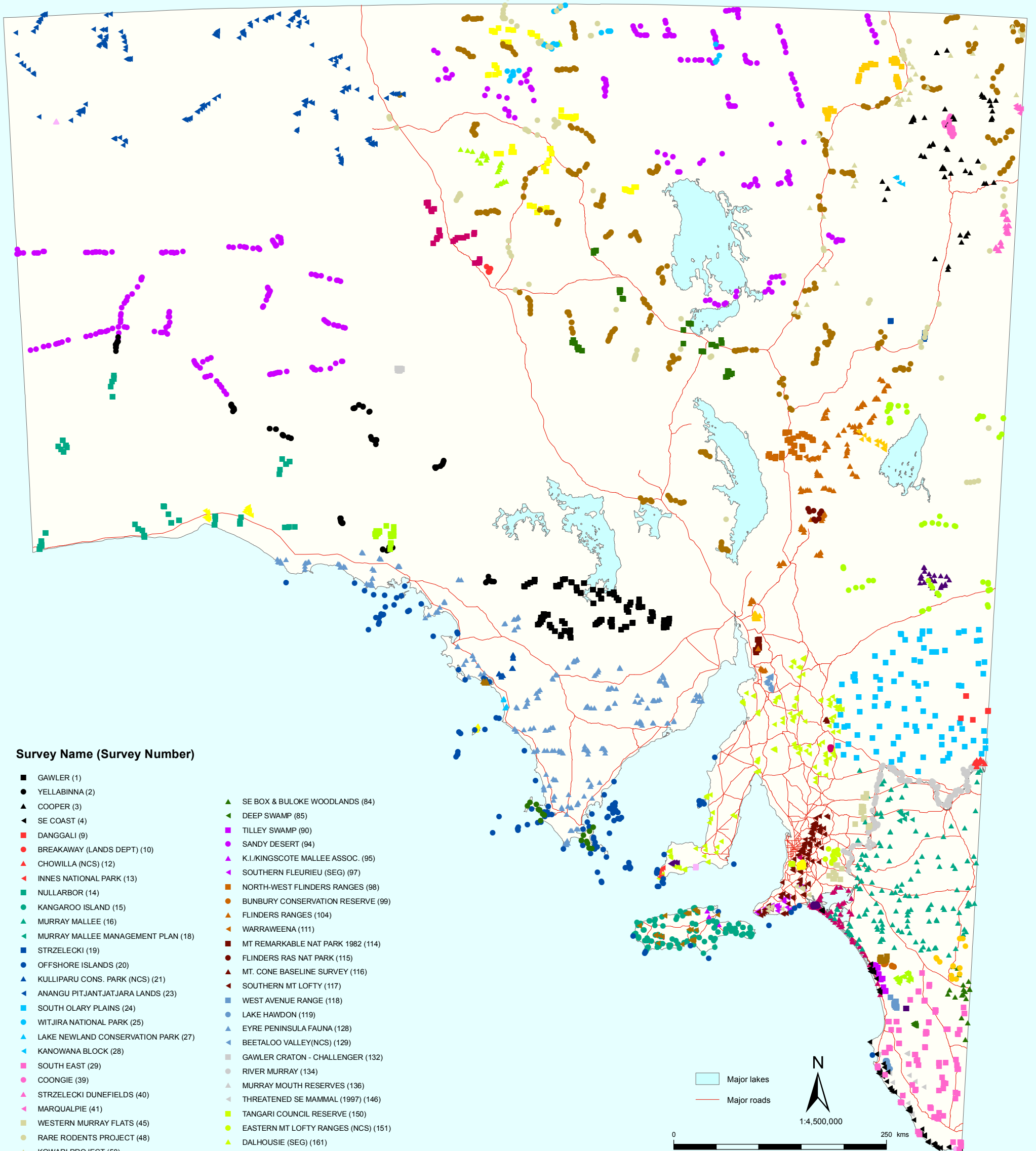


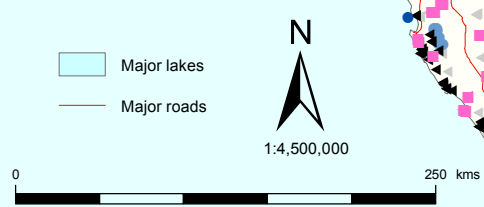
BIOLOGICAL SURVEY OF SOUTH AUSTRALIA

Vertebrate Sites



Survey Name (Survey Number)

- GAWLER (1)
- YELLABINNA (2)
- ▲ COOPER (3)
- ◄ SE COAST (4)
- DANGGALI (9)
- BREAKAWAY (LANDS DEPT) (10)
- ▲ CHOWILLA (NCS) (12)
- ◄ INNES NATIONAL PARK (13)
- NULLARBOR (14)
- KANGAROO ISLAND (15)
- ▲ MURRAY MALLEE (16)
- ◄ MURRAY MALLEE MANAGEMENT PLAN (18)
- STRZELECKI (19)
- OFFSHORE ISLANDS (20)
- ▲ KULLIPARU CONS. PARK (NCS) (21)
- ◄ ANANGU PITJANTJATJARA LANDS (23)
- SOUTH OLARY PLAINS (24)
- WITJIRA NATIONAL PARK (25)
- ▲ LAKE NEWLAND CONSERVATION PARK (27)
- ◄ KANOWANA BLOCK (28)
- SOUTH EAST (29)
- COONGIE (39)
- ▲ STRZELECKI DUNEFIELDS (40)
- ◄ MARQUALPIE (41)
- WESTERN MURRAY FLATS (45)
- RARE RODENTS PROJECT (48)
- ▲ KOWARI PROJECT (50)
- ◄ MT. LOFTY RANGES SOUTHERN EMU WREN (52)
- GOYDER LAGOON (53)
- SE FIRE STUDY(NCS) (64)
- ▲ MT BROWN (NCS) (66)
- ◄ GAMMON RANGES (NCS) (67)
- MESSENT CONSERVATION PARK (68)
- STONY DESERTS (69)
- ▲ VENUS BAY C P AND BETTONG MONITORING (71)
- ◄ SOOTY DUNNART KANGAROO IS (72)
- YUMBARRA CONSERVATION PARK (73)
- NORTH OLARY PLAINS (74)
- ▲ ARKARINGA (ANZSES) (75)
- ◄ GUM LAGOON CONS. PARK (NCS) (76)
- LAKE EYRE SOUTH (77)
- SOUTHERN EYRE PENINSULA (80)
- ▲ SE BOX & BULOKE WOODLANDS (84)
- ◄ DEEP SWAMP (85)
- TILLEY SWAMP (90)
- SANDY DESERT (94)
- ▲ K.I.KINGSCOTE MALLEE ASSOC. (95)
- ◄ SOUTHERN FLEURIEU (SEG) (97)
- NORTH-WEST FLINDERS RANGES (98)
- BUNBURY CONSERVATION RESERVE (99)
- ▲ FLINDERS RANGES (104)
- ◄ WARRAWEENA (111)
- MT REMARKABLE NAT PARK 1982 (114)
- FLINDERS RAS NAT PARK (115)
- ▲ MT. CONE BASELINE SURVEY (116)
- ◄ SOUTHERN MT LOFTY (117)
- WEST AVENUE RANGE (118)
- LAKE HAWDON (119)
- ▲ EYRE PENINSULA FAUNA (128)
- ◄ BEETALOO VALLEY(NCS) (129)
- GAWLER CRATON - CHALLENGER (132)
- RIVER MURRAY (134)
- ▲ MURRAY MOUTH RESERVES (136)
- ◄ THREATENED SE MAMMAL (1997) (146)
- TANGARI COUNCIL RESERVE (150)
- EASTERN MT LOFTY RANGES (NCS) (151)
- ▲ DALHOUSIE (SEG) (161)
- ◄ MID NORTH AND YORKE PENINSULA (162)
- MT WILLOUGHBY IPA (164)
- HOPKINS CREEK (NCS) (168)
- ▲ COORONG AND LAKES WATER BIRDS (177)
- ◄ REVEGETATION MONITORING - AC ROBINSON (178)
- BMA SOUTH-EAST - GENERAL SVY (187)
- CAPE BARREN GOOSE (HINDMARSH IS) (192)
- ▲ BIMBOWRIE C R BIOLOGICAL SURVEY (193)
- ◄ WARRENBEN CP FLORA & FAUNA (2004) (196)
- ARID RIVERS (207)
- MOUNT BOLD RESERVOIR BIOL SURVEY (464)
- ▲ INVESTIGATOR GROUP (555)
- ◄ YALATA BIOLOGICAL SURVEY (AW NRM) (575)
- POINT DAVENPORT CP (576)
- PICK SWAMP BIRD MONITORING PROGRAM (591)
- ▲ TJAKURA MONITORING (595)



Produced by Environmental Information
 Department for Environment and Heritage
 GPO Box 1047 Adelaide SA 5001
 Web: www.environment.sa.gov.au/mapland

Projection Lambert Conformal Conic
Datum Geocentric Datum of Australia, 1994
Compiled February 2008

© Copyright Department for Environment and Heritage 2008. All Rights Reserved. All works and information displayed are subject to Copyright. For the reproduction or publication beyond that permitted by the Copyright Act 1968 (Cwth) written permission must be sought from the Department.

Although every effort has been made to ensure the accuracy of the information displayed, the Department, its agents, and officers and employees make no representations, either express or implied, that the information displayed is accurate or fit for any purpose and expressly disclaims all liability for loss or damage arising from reliance upon the information displayed.

