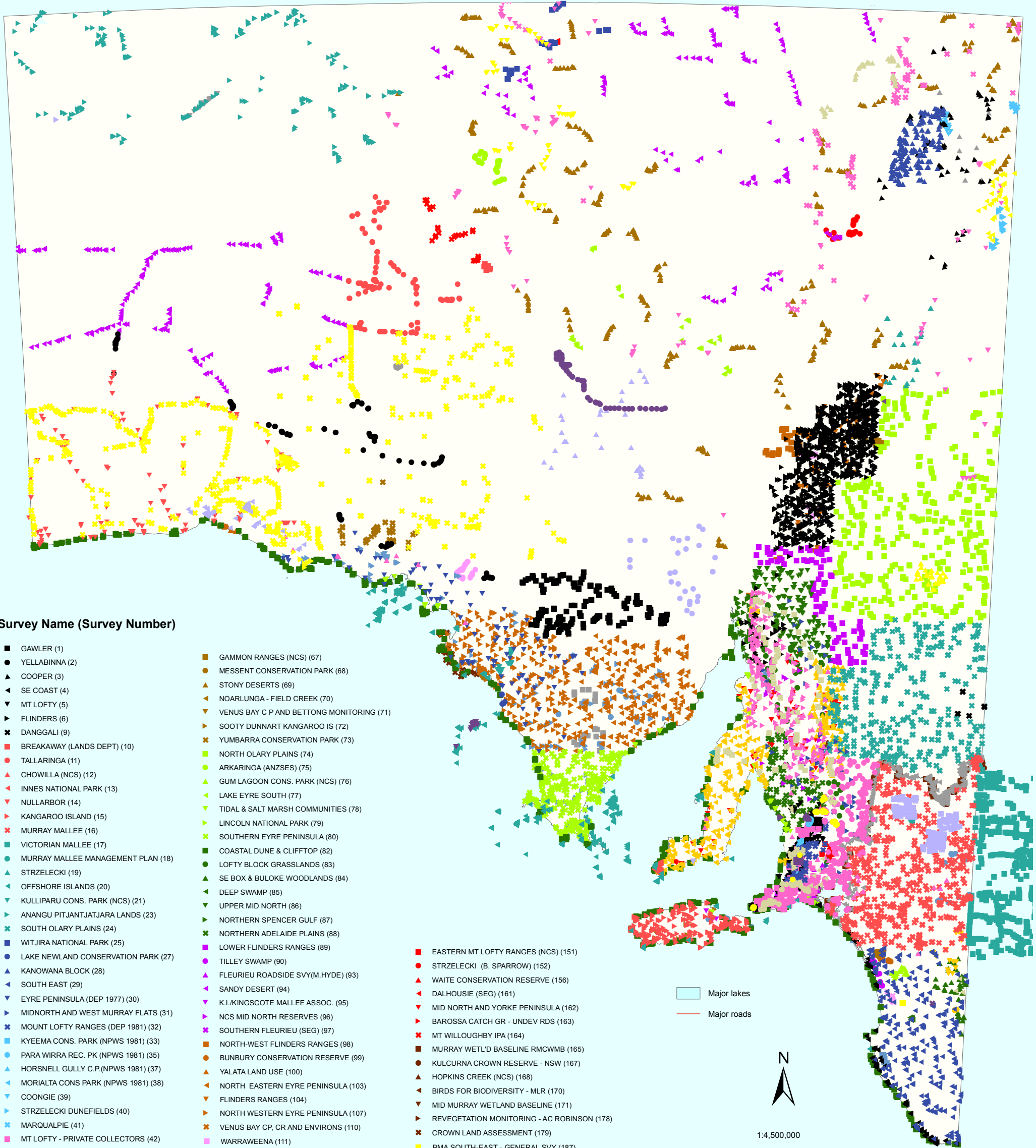


BIOLOGICAL SURVEY OF SOUTH AUSTRALIA

Vegetation Sites



Survey Name (Survey Number)

- | | |
|---------------------------------------|--|
| ■ GAWLER (1) | ■ GAMMON RANGES (NCS) (67) |
| ● YELLABINNA (2) | ● MESSENT CONSERVATION PARK (68) |
| ▲ COOPER (3) | ▲ STONY DESERTS (69) |
| ◄ SE COAST (4) | ◄ NOARLUNGA - FIELD CREEK (70) |
| ▼ MT LOFTY (5) | ▼ VENUS BAY C P AND BETTONG MONITORING (71) |
| ► FLINDERS (6) | ► SOOTY DUNNART KANGAROO IS (72) |
| ✱ DANGGALI (9) | ✱ YUMBARRA CONSERVATION PARK (73) |
| ■ BREAKAWAY (LANDS DEPT) (10) | ■ NORTH OLARY PLAINS (74) |
| ● TALLARINGA (11) | ● ARKARINGA (ANZSES) (75) |
| ▲ CHOWILLA (NCS) (12) | ▲ GUM LAGOON CONS. PARK (NCS) (76) |
| ◄ INNES NATIONAL PARK (13) | ◄ LAKE EYRE SOUTH (77) |
| ▼ NULLARBOR (14) | ▼ TIDAL & SALT MARSH COMMUNITIES (78) |
| ► KANGAROO ISLAND (15) | ► LINCOLN NATIONAL PARK (79) |
| ✱ MURRAY MALLEE (16) | ✱ SOUTHERN EYRE PENINSULA (80) |
| ■ VICTORIAN MALLEE (17) | ■ COASTAL DUNE & CLIFFTOP (82) |
| ● MURRAY MALLEE MANAGEMENT PLAN (18) | ● LOFTY BLOCK GRASSLANDS (83) |
| ▲ STRZELECKI (19) | ▲ SE BOX & BULOKE WOODLANDS (84) |
| ◄ OFFSHORE ISLANDS (20) | ◄ DEEP SWAMP (85) |
| ▼ KULLIPARU CONS. PARK (NCS) (21) | ▼ UPPER MID NORTH (86) |
| ► ANANGU PITJANTJATJARA LANDS (23) | ► NORTHERN SPENCER GULF (87) |
| ✱ SOUTH OLARY PLAINS (24) | ✱ NORTHERN ADELAIDE PLAINS (88) |
| ■ WITJIRA NATIONAL PARK (25) | ■ LOWER FLINDERS RANGES (89) |
| ● LAKE NEWLAND CONSERVATION PARK (27) | ● TILLEY SWAMP (90) |
| ▲ KANOWANA BLOCK (28) | ▲ FLEURIEU ROADSIDE SVY(M.HYDE) (93) |
| ◄ SOUTH EAST (29) | ◄ SANDY DESERT (94) |
| ▼ EYRE PENINSULA (DEP 1977) (30) | ▼ K.I.KINGSCOTE MALLEE ASSOC. (95) |
| ► MIDNORTH AND WEST MURRAY FLATS (31) | ► NCS MID NORTH RESERVES (96) |
| ✱ MOUNT LOFTY RANGES (DEP 1981) (32) | ✱ SOUTHERN FLEURIEU (SEG) (97) |
| ■ KYEEMA CONS. PARK (NPWS 1981) (33) | ■ NORTH-WEST FLINDERS RANGES (98) |
| ● PARA WIRRA REC. PK (NPWS 1981) (35) | ● BUNBURY CONSERVATION RESERVE (99) |
| ▲ HORSNELL GULLY C.P.(NPWS 1981) (37) | ▲ YALATA LAND USE (100) |
| ◄ MORIALTA CONS PARK (NPWS 1981) (38) | ◄ NORTH EASTERN EYRE PENINSULA (103) |
| ▼ COONGIE (39) | ▼ FLINDERS RANGES (104) |
| ► STRZELECKI DUNEFIELDS (40) | ► NORTH WESTERN EYRE PENINSULA (107) |
| ✱ MARQUALPIE (41) | ✱ VENUS BAY CP, CR AND ENVIRONS (110) |
| ■ MT LOFTY - PRIVATE COLLECTORS (42) | ■ WARRAWEENA (111) |
| ● WESTERN MURRAY FLATS (45) | ● PUREBA (113) |
| ▲ TEMPERATE GRASSLANDS - WWF (46) | ▲ MT REMARKABLE NAT PARK 1982 (114) |
| ◄ WESTERN MURRAY MALLEE(MK HYDE) (47) | ◄ FLINDERS RAS NAT PARK (115) |
| ▼ RARE RODENTS PROJECT (48) | ▼ MT. CONE BASELINE SURVEY (116) |
| ► MIDNORTH (49) | ► SOUTHERN MT LOFTY (117) |
| ✱ KOWARI PROJECT (50) | ✱ WEST AVENUE RANGE (118) |
| ■ RAILWAY CORRIDOR (NCS) (51) | ■ LAKE HAWDON (119) |
| ● MT LOFTY-EMU WREN (52) | ● BRUSH CUTTING MONITORING (121) |
| ▲ GOYDER LAGOON (53) | ▲ COW ISLAND (UNI. OF S.A.) (122) |
| ◄ GRASSY WOODLANDS(MK HYDE) (54) | ◄ ALTHORPE & NEPTUNE ISLAND SVY (126) |
| ▼ ANGASTON DISTRICT COUNCIL (55) | ▼ KOONIBBA (127) |
| ► HAPPY VALLEY DISTRICT COUNCIL (56) | ► EYRE PENINSULA FAUNA (128) |
| ✱ STIRLING DISTRICT COUNCIL (57) | ✱ BEETALOO VALLEY(NCS) (129) |
| ■ PYGMY BLUE TONGUE PROJECT (58) | ■ HINCKS & HAMBIDGE CP (131) |
| ● HERITAGE AGREEMENT SITES (59) | ● GAWLER CRATON - CHALLENGER (132) |
| ▲ BURRA HILLS (62) | ▲ PHOTOPOINTS - NPSWA GENERAL (133) |
| ◄ YORKE PENINSULA (63) | ◄ RIVER MURRAY (134) |
| ▼ SE FIRE STUDY (NCS) (64) | ▼ PHOTOPOINTS - UNMARKED GENERAL (135) |
| ► NOARLUNGA - CHRISTIE CREEK (65) | ► MURRAY MOUTH RESERVES (136) |
| ✱ MT BROWN (NCS) (66) | ✱ YORKE AND NTHN LOFTY (148) |
| | ■ EASTERN MT LOFTY RANGES (NCS) (151) |
| | ● STRZELECKI (B. SPARROW) (152) |
| | ▲ WAITE CONSERVATION RESERVE (156) |
| | ◄ DALHOUSIE (SEG) (161) |
| | ▼ MID NORTH AND YORKE PENINSULA (162) |
| | ► BAROSSA CATCH GR - UNDEV RDS (163) |
| | ✱ MT WILLOUGHBY IPA (164) |
| | ■ MURRAY WET'L'D BASELINE RMCWMB (165) |
| | ● KULCURNIA CROWN RESERVE - NSW (167) |
| | ▲ HOPKINS CREEK (NCS) (168) |
| | ◄ BIRDS FOR BIODIVERSITY - MLR (170) |
| | ▼ MID MURRAY WETLAND BASELINE (171) |
| | ► REVEGETATION MONITORING - AC ROBINSON (178) |
| | ✱ CROWN LAND ASSESSMENT (179) |
| | ■ BMA SOUTH-EAST - GENERAL SVY (187) |
| | ● BMA MLR GENERAL SVY (191) |
| | ▲ BIMBOWRIE C R BIOLOGICAL SURVEY (193) |
| | ◄ INNAMINCKA R R BIOLOGICAL SURVEY (194) |
| | ▼ ARID RIVERS (207) |
| | ► YELLABINNA RR (ILUKA RESOURCES) (428) |
| | ✱ GAWLER CRATON (430) |
| | ■ MOUNT BOLD RESERVOIR BIOL SURVEY (464) |
| | ● PROMINENT HILL (OXIANA) (467) |
| | ▲ PARA WOODLANDS (471) |
| | ◄ BEVERLEY URANIUM MINE EIS (546) |
| | ▼ INVESTIGATOR GROUP (555) |
| | ► BUCKLAND PARK ENVIRONS (557) |
| | ✱ ORCHID MONITORING (HOUSTON) (560) |
| | ■ NORTHERN MURRAY MALLEE LANDSCAPE TRIAL (562) |
| | ● YUDNAPINNA AND LAKES (572) |
| | ▲ WOOMERA PROHIBITED AREA (573) |
| | ◄ YALATA BIOLOGICAL SURVEY (AW NRM) (575) |
| | ▼ POINT DAVENPORT CP (576) |
| | ► TJAKURA MONITORING (595) |

Major lakes

Major roads



1:4,500,000



Produced by Environmental Information
Department for Environment and Heritage
GPO Box 1047 Adelaide SA 5001
Web: www.environment.sa.gov.au/mapland
Projection Lambert Conformal Conic
Datum Geocentric Datum of Australia, 1994
Compiled February 2008

© Copyright Department for Environment and Heritage 2008. All Rights Reserved. All works and information displayed are subject to Copyright. For the reproduction or publication beyond that permitted by the Copyright Act 1968 (Cwth) written permission must be sought from the Department.

Although every effort has been made to ensure the accuracy of the information displayed, the Department, its agents, and officers and employees make no representations, either express or implied, that the information displayed is accurate or fit for any purpose and expressly disclaims all liability for loss or damage arising from reliance upon the information displayed.

