

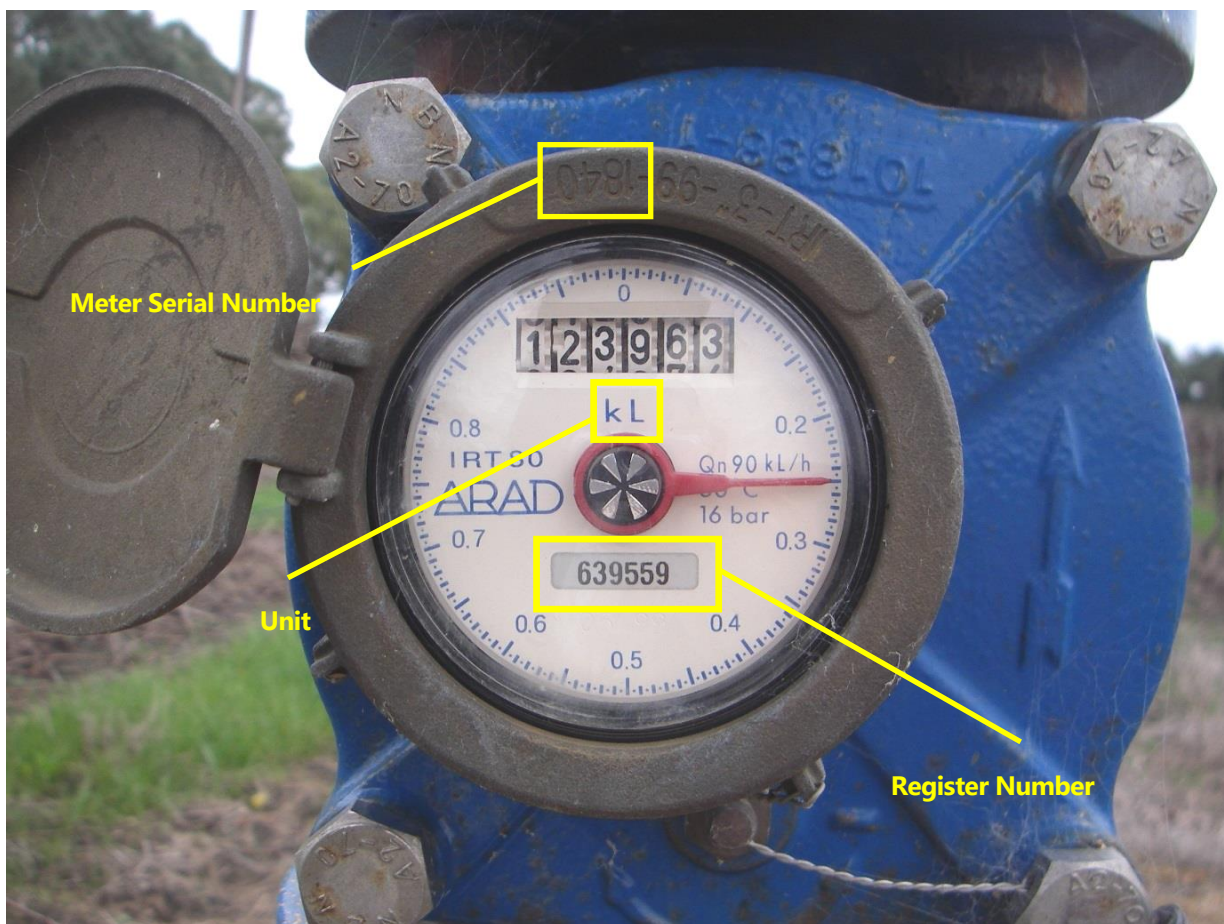
How To Read Your Meter: Mechanical Meters

Some licensed water sources will need to be fitted with a water meter to accurately measure water use and ensure the volume used remains within water allocations. Measuring water used from licensed sources is an important tool in managing the resource and will help secure a sustainable future for water resources.

A condition of some water licences requires the licensee to supply meter reads to the Department. To comply with this condition you can complete an online *Meter Reading Form*. The link to this form is on the next page.

There are a number of different types of meters on the market; however, this fact sheet aims to assist you with reading the two most common forms of meters and identifying the meter serial number and actual meter read.

The meter below is a 6 digit 80 mm meter. The meter serial number is located on the outer rim of the register. **The meter serial number is 1840 and the meter reading is 123963 kL.**

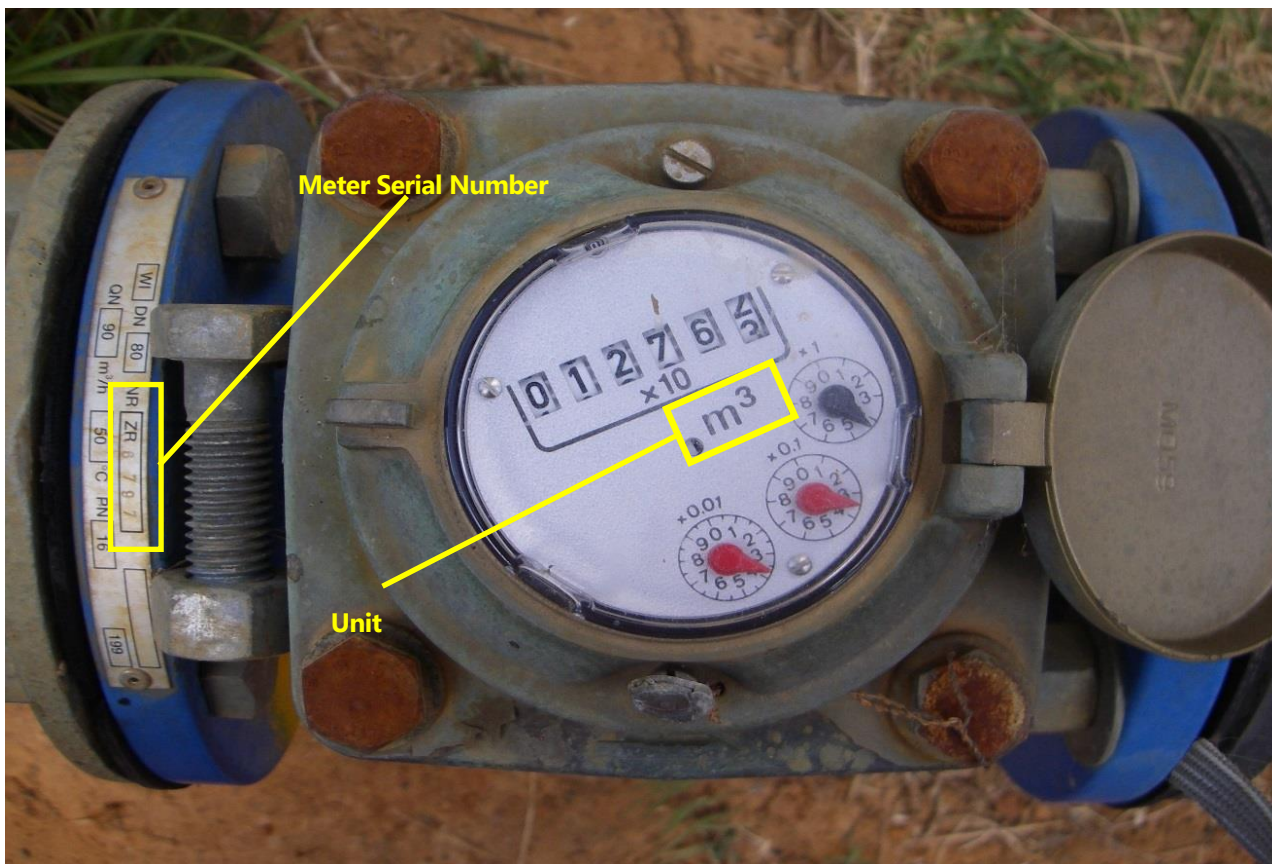


Department of Environment, Water and Natural Resources | (08) 8463 6876 | DEWNRWaterLicensing@sa.gov.au



Government of South Australia
Department of Environment,
Water and Natural Resources

The meter below is a 7 digit 80 mm meter. The meter serial number is located on the flange. The x10 label indicates that an additional digit needs to be added to the end of the number displayed in the window to give a reading in m³ (kL). **The meter serial number is 6797 and the meter reading is 0127624 kL.**



If you are unsure of how to read your meter, or where to find the the location of the meter serial number, please contact the Department by telephoning (08) 8463 6876 or emailing DEWNRWaterLicensing@sa.gov.au. The easiest way for us to provide you with accurate advice is for you to supply a photo of your meter.

You can access the online *Meter Reading Form* by going to www.environment.sa.gov.au/WaterMeterReading.

