

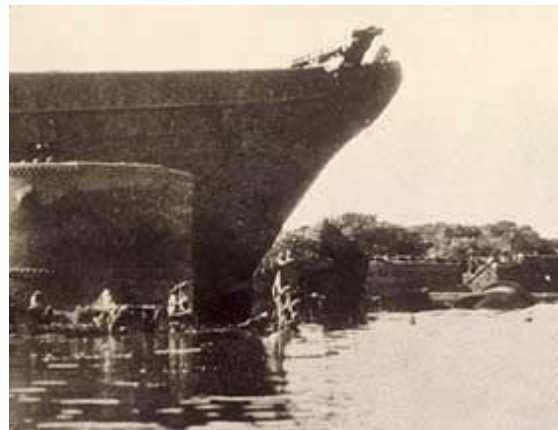
SHIPWRECKS OF SOUTH AUSTRALIA

SUNBEAM - Garden Island

The three masted barque *Sunbeam* was built at Kircaldy, Scotland in 1857 by John Brown and Company. The iron hulled vessel of 443 gross tons measured 141.5 feet (43.1 m) in length, 27.1 feet (8.3 m) breadth and 16.8 feet (5.1 m) depth.

After a number of ownership changes and many years trading internationally, the *Sunbeam* was converted into a coal hulk in Melbourne in 1886. Shortly afterwards it was brought to Port Adelaide to serve as a general purpose hulk within the port.

The *Sunbeam* was abandoned in the Graveyard circa 10 October 1910 – the first iron vessel to be placed there. Today the vessel is generally intact along its entire length, and with its bow facing the water is easily recognisable. A boiler of unknown origin is lying under the starboard bow.



Sunbeam at Garden Island, 1933
Photo: SLSA: *Adelaide Chronicle*, 20 July 1933



Sunbeam today

FOR MORE INFORMATION

State Heritage Unit
Department of Environment, Water and Natural Resources
P (08) 8124 4960
E DEWNRHeritage@sa.gov.au
www.environment.sa.gov.au

