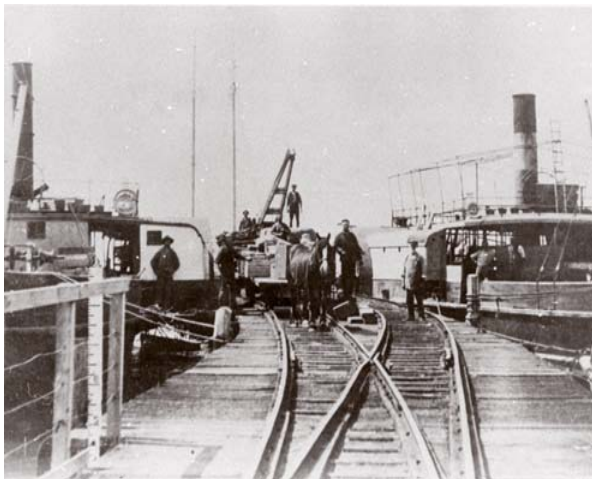


During the latter half of the nineteenth and early twentieth centuries the River Murray was a major inland highway for pastoralists, settlers and travellers. Fleets of paddle steamers and their barges carried produce from stations and farms to transit points downriver.

There were floating shops bringing goods to the settlers, mail steamers crossing the lakes, mission boats and passenger liners, as well as small fishing boats, ferries, powerful milk launches and boats that helped build the weirs and kept the channels free of snags.

Ports, trading companies and shipbuilding facilities were established, and many of the Murray's settlements developed around the trade brought by the river boats.



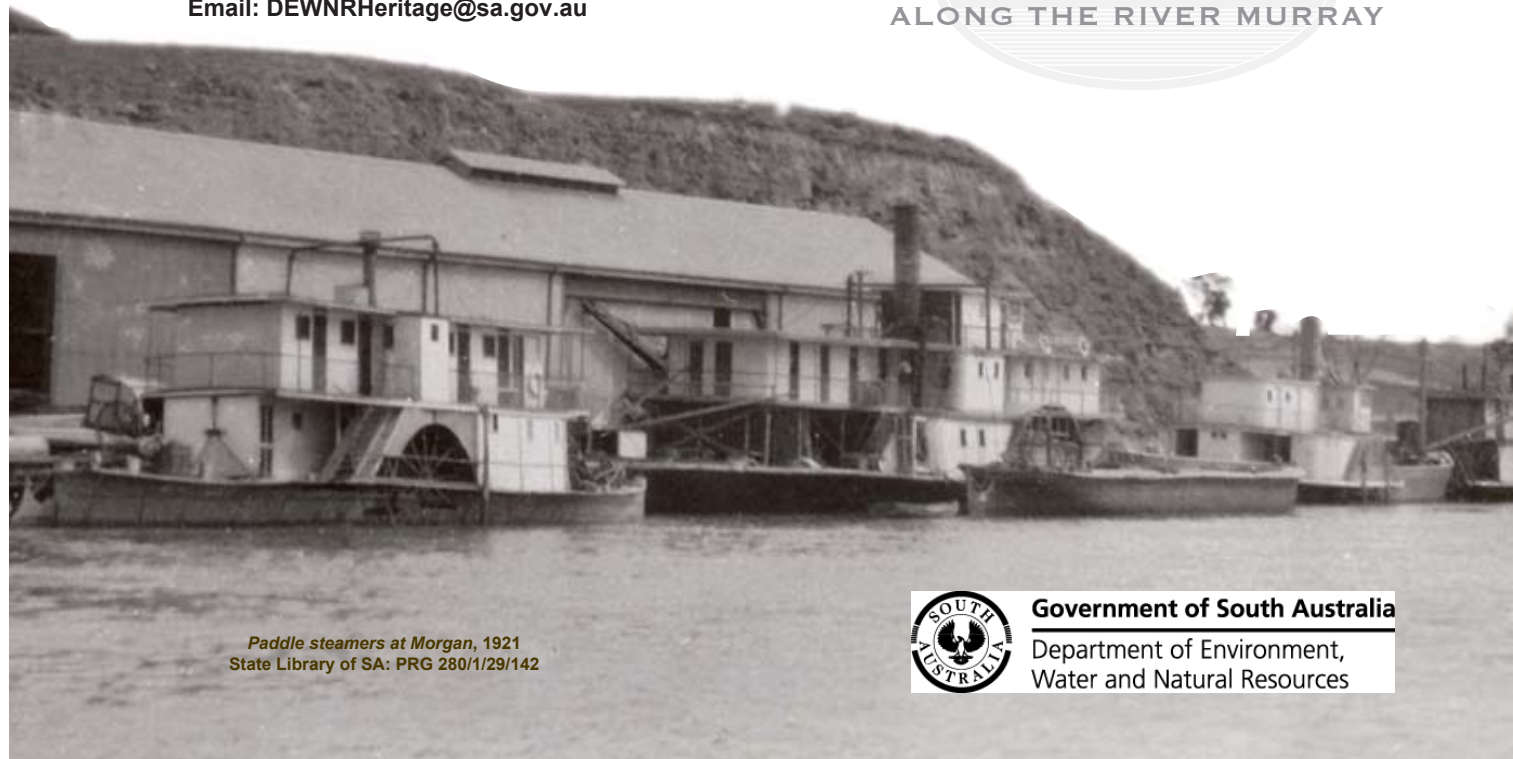
*Paddle steamers 'Jupiter' and 'Murray' at Milang Jetty, 1938*  
State Library of SA: PRG 1258/1/2774

**Interpretive panels are located at:**

- Border Cliffs
- Renmark
- Berri
- Loxton
- Waikerie
- Morgan (2 signs)
- Blanchetown (2 signs)
- Mannum (2 signs)
- Murray Bridge
- Tailem Bend
- Meningie
- Point Malcolm
- Wellington
- Milang
- Goolwa

**For further information about the *River Boat Trail***  
contact the State Heritage Unit

**Department for Environment, Water and  
Natural Resources**  
**Phone: (08) 8124 4960**  
**Email: [DEWNRHeritage@sa.gov.au](mailto:DEWNRHeritage@sa.gov.au)**



*Paddle steamers at Morgan, 1921*  
State Library of SA: PRG 280/1/29/142

# RIVER BOAT TRAIL

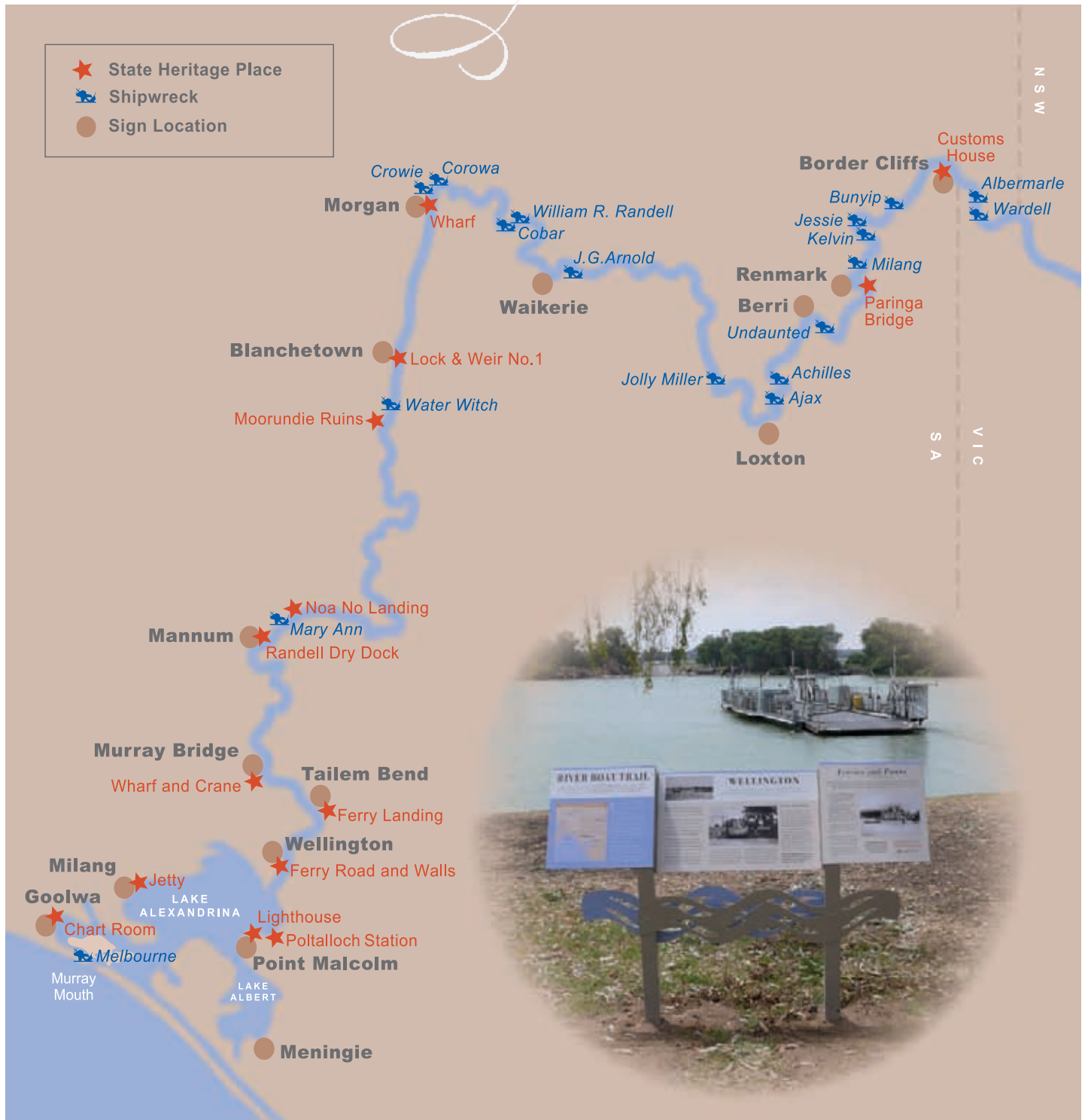
SOUTH AUSTRALIA'S BUILT  
AND MARITIME HERITAGE PLACES  
ALONG THE RIVER MURRAY



**Government of South Australia**  
Department of Environment,  
Water and Natural Resources

# SIGN LOCATIONS AND FEATURED SITES

- ★ State Heritage Place
- 🚢 Shipwreck
- Sign Location



Installed in February 2009, the *River Boat Trail* is a series of 18 interpretive panels along the South Australian section of the River Murray from Border Cliffs to Goolwa and across Lakes Alexandrina and Albert. It highlights historic sites along the waterway and tells the stories of its people, settlements and vessels.

Many of the featured heritage places and river wrecks are protected under South Australian legislation. You are encouraged to visit, enjoy and appreciate these significant sites, but please do not interfere with them in any way.