

KANGAROO ISLAND SHIPWRECK TRAIL



Since colonial settlement in 1836, more than 80 vessels, ranging from international sailing and steam ships to coastal traders and local fishing craft, have come to grief in the hazardous waters around Kangaroo Island.

By their very nature, these wrecks provide dramatic tales of tragedy and loss. They are accounts of disaster and sometimes death, but they are also stories of bravery, survival and endurance.

The *Kangaroo Island Shipwreck Trail* recounts the stories of seven Kangaroo Island shipwrecks as reported in contemporary newspapers or, in one case, as described in a survivor's letter home.

The trail consists of an introductory panel at both Kingscote and Penneshaw and seven story panels at related sites around Kangaroo Island.



Shipwrecks are fragile and non-renewable resources providing archaeologists with information about the past.

They are also memorials to the unpredictable and savage temperament of the sea. The eerie and jumbled remains of these wrecks provide habitats for a variety of marine flora and fauna and are exciting recreational dive sites.

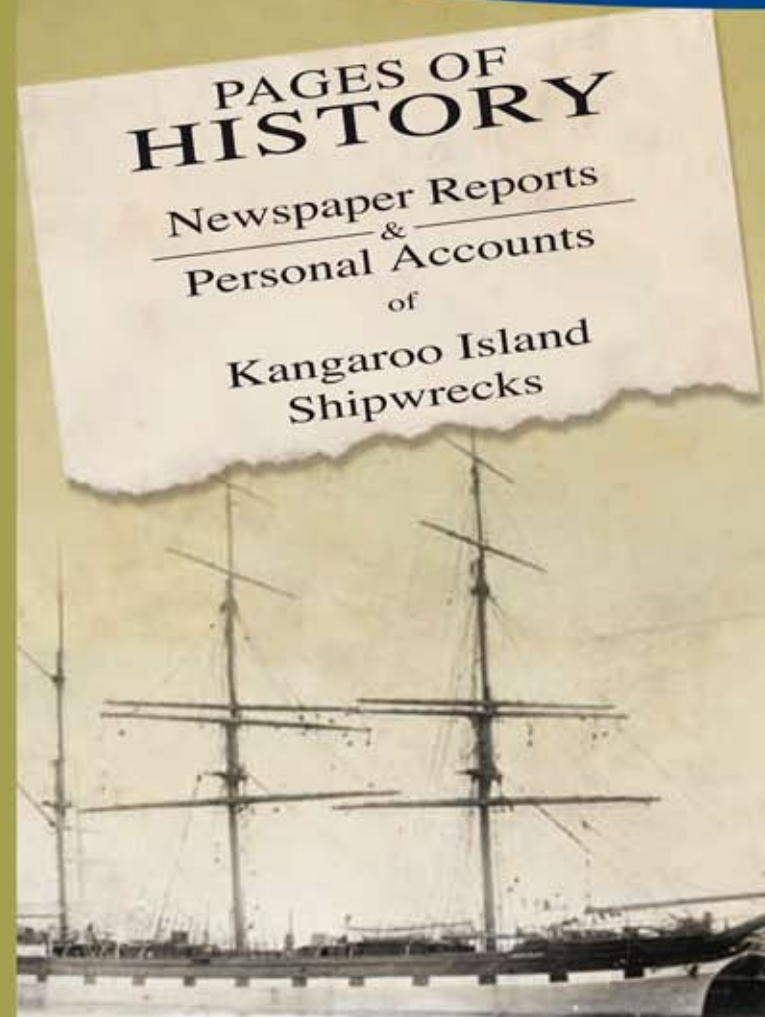
Historic shipwrecks are protected by legislation so that present and future generations can enjoy and learn from them.



For Further Information about Kangaroo Island Shipwrecks contact

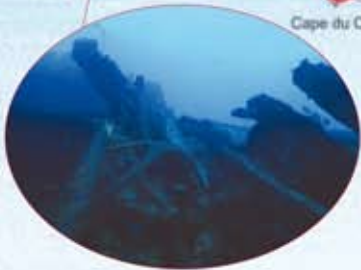
Heritage Branch
Department for Environment & Heritage
Phone: (08) 8124 4944
Email: heritage@sa.gov.au
Web: www.heritage.sa.gov.au

Cover Image: *Loch May*
June 2005 ©



Government of South Australia
Department for Environment
and Heritage





The Kangaroo Island Shipwreck Trail consists of two introductory signs at Kingscote and Penneshaw, and seven story panels at related sites around Kangaroo Island. These signs have been placed at Antechamber Bay, Point Tinline, Cape Gartheaume, Cape du Couedic, West Bay, Cape Borda and Cape Torrens.

For additional information about South Australian shipwrecks view www.heritage.sa.gov.au

