

SHIPWRECKS OF SOUTH AUSTRALIA

GRACE DARLING - Garden Island

The schooner rigged screw steamer *Grace Darling* was built in 1907 at Hardinxveld, Netherlands for John Darling and Company, flour millers of Port Adelaide. The steel hulled vessel measured 175.0 feet (53.3 m) in length, 27.0 feet (8.2 m) breadth, 12.8 feet (3.9 m) depth and was 622 gross tons.

Following its arrival at Port Adelaide in 1908, the *Grace Darling* was employed in the coastal trade, primarily as a passenger vessel, but also carrying general cargo and at times acting as a tug and a wheat lighter. The majority of its voyages were in South Australian waters, but it also journeyed interstate.

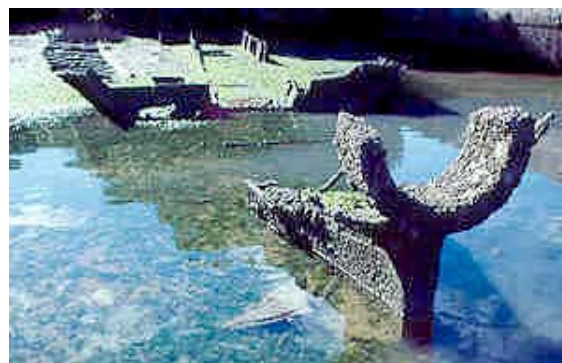


Grace Darling, c1900s. Photo: Maritime Museum

The *Grace Darling's* career involved a number of minor mishaps, including strandings, flooding, a collision and a potentially serious engine room fire at the Port Adelaide wharf. On 19 June 1931, after 23 years of service, the steamer was abandoned at Garden Island amongst the other derelicts in the Ships' Graveyard. Today its extensively salvaged remains lie predominantly amongst the mangroves.



Grace Darling (in background) at Garden Island. Photo: SLSA: *Adelaide Chronicle*, 20 July 1933



Grace Darling today

FOR MORE INFORMATION

State Heritage Unit

Department of Environment, Water and Natural Resources

P (08) 8124 4960

E DEWNRHeritage@sa.gov.au

www.environment.sa.gov.au

