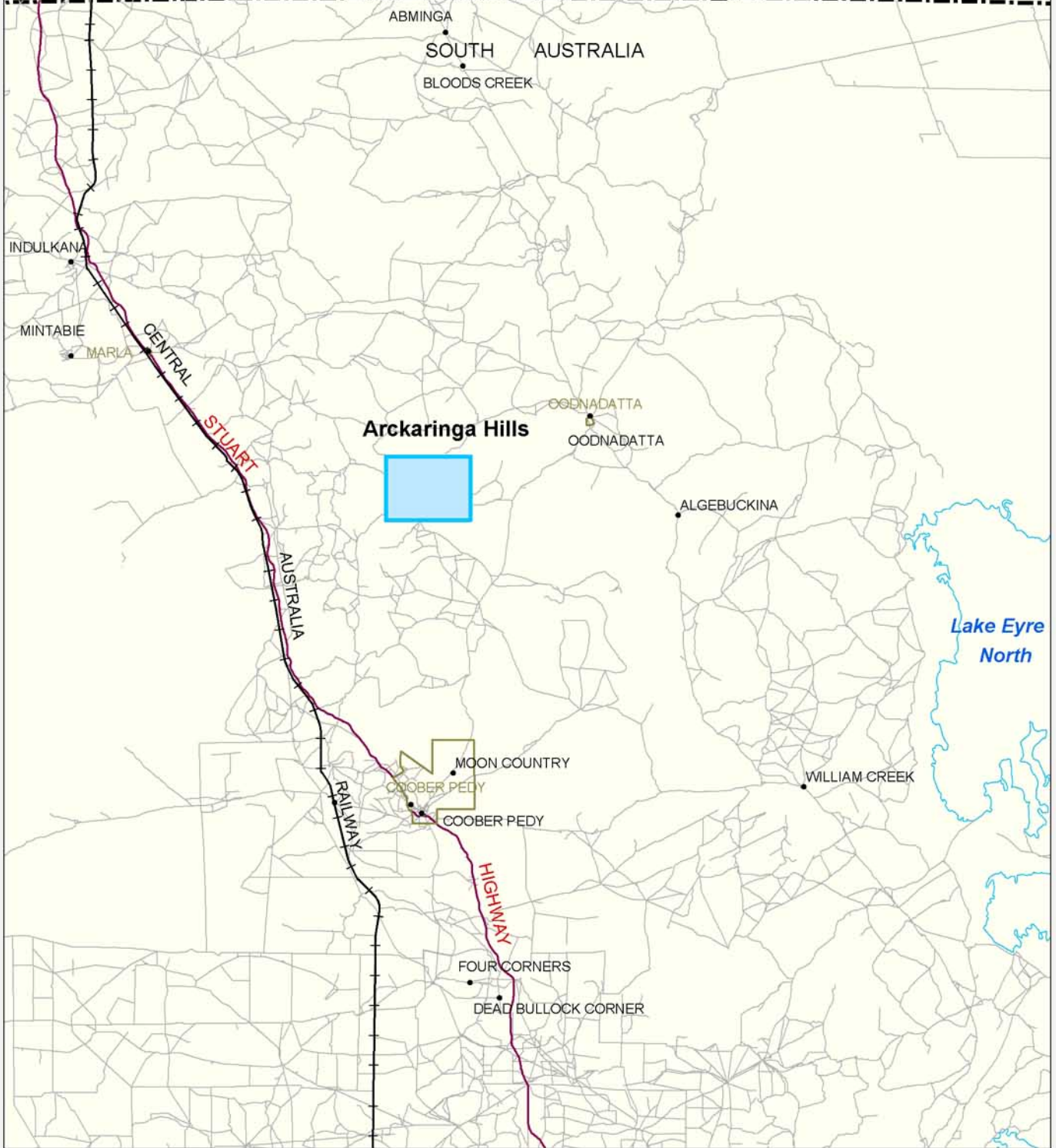


Arckaringa Hills

NORTHERN TERRITORY



Produced by Environmental Information
Department for Environment and Heritage
PO Box 550 Marleston SA 5033
Web: www.environment.sa.gov.au/mapland

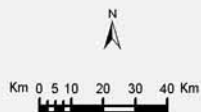
Data Source PlanningSA Data/DEH Data Sets

Projection Lambert Conformal Conic
Compiled 22 March 2005
Datum Geocentric Datum of Australia, 1994

Legend

- State Heritage Areas
- Suburbs
- Major Roads
- Railway
- Town

Beltana



© Copyright Department for Environment and Heritage 2005.
All Rights Reserved. All works and information displayed are subject to Copyright. For the reproduction or publication beyond that permitted by the Copyright Act 1969 (Cwth) written permission must be sought from the Department.

Although every effort has been made to ensure the accuracy of the information displayed, the Department, its agents, officers and employees make no representation, either express or implied, that the information displayed is accurate or fit for any purpose and expressly disclaims all liability for loss or damage arising from reliance upon the information displayed.