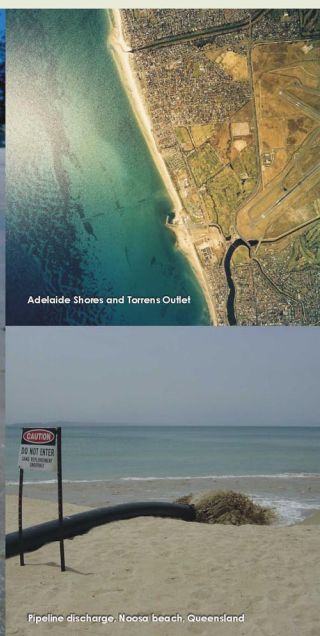
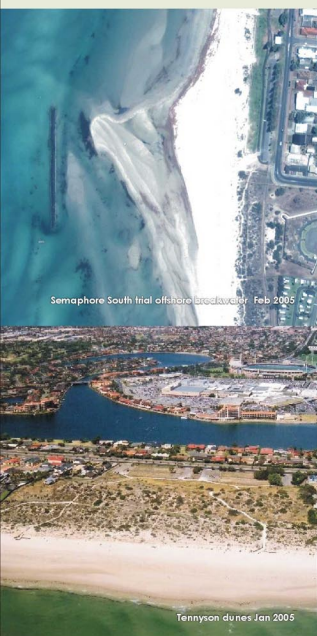
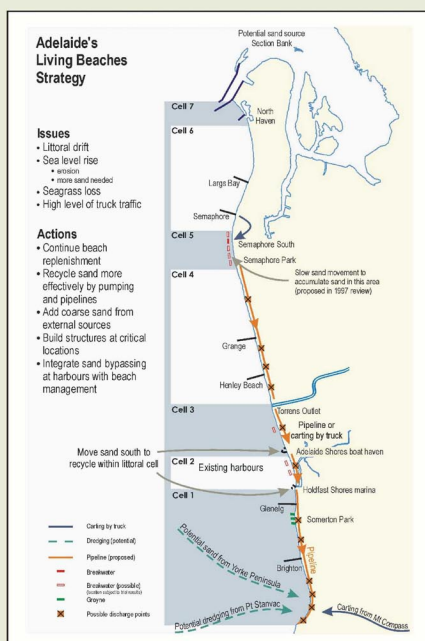


# The Strategy

“...a strategy of beach management for the future that maintains the principle of sand recycling.”

John Hill  
Minister for Environment and Conservation

- maintain sandy beaches ✦ replenish beaches
- reduce trucking ✦ recycle sand
- adapt to climate change ✦ add more sand
- effective handling of sand ✦ build key structures
- improved use of existing sand ✦ integrate harbour and beach management



The Adelaide's Living Beaches Strategy has been developed to manage the ongoing drift of sand along the Adelaide Plains coast, from Kingston Park to the Outer Harbor breakwaters.