

World Wetlands Day

*Monitoring and Research in the
Lower Lakes and Coorong*

*The Living Murray LLCMM &
Murray Futures CLLMM Programs*

Friday 1 February 2013

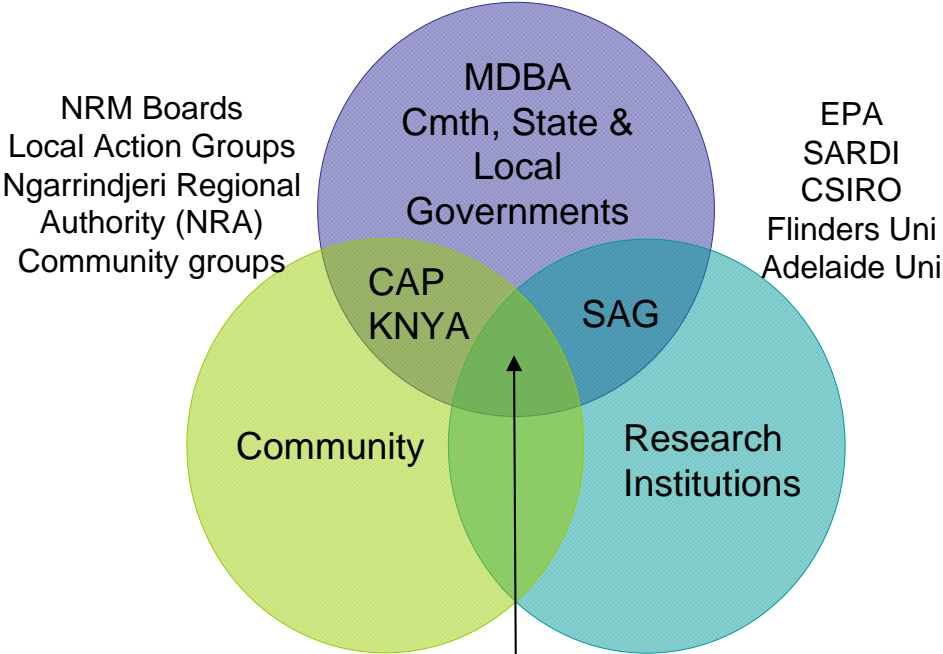


Government of South Australia
Department of Environment,
Water and Natural Resources



Lakes Alexandrina & Albert and the Coorong Partnerships

The Living Murray - DEWNR
Murray Futures - DEWNR
 CEWH - DSEWPaC
 SA Water



KNYA - Kungun Ngarrindjeri Yunnan Agreement Taskforce
 CAP - Community Advisory Panel

Synergies for monitoring and management

SAG - Scientific Advisory Group



Government of South Australia
 Department of Environment,
 Water and Natural Resources



The Living Murray



0 50 km



Murray River Channel
(Icon Site 6)



Murray-Darling Basin



Australian Government



The Living Murray LLCMM Icon Site Program

- Chowilla and LLCMM Icon Site programs in SA
- Ecological monitoring (condition and intervention)
- Informs need for environmental water 'bids'
 - Access to 500 GL of TLM water and >1000 GL of CEWH water
- Ecological input into operation of the barrages/lakes
- Communications and engagement (community & scientific)
- Indigenous Partnerships Program



Government of South Australia

Department of Environment,
Water and Natural Resources





Government of South Australia
Department of Environment,
Water and Natural Resources





Government of South Australia
Department of Environment,
Water and Natural Resources

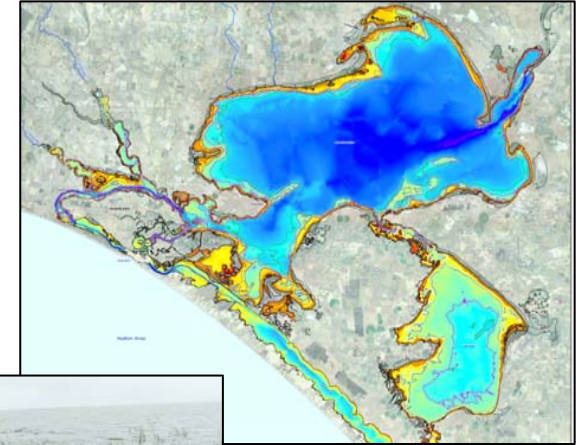


Murray Futures CLLMM Recovery Project

July 2008

Basin States signed an Inter-Governmental Agreement on Murray Darling Basin Reform:

- Includes South Australia's priority projects under the *Murray Futures Program*
- up to \$200M to deliver an enduring response to environmental problems facing the CLLMM region



February 2009

Development of the CLLMM Long-Term Plan



February 2010

Early Works for the Water for the Future, Enduring Response for the Coorong and Lower Lakes



May 2012

CLLMM agreement executed, with implementation to 2016



Government of South Australia

Department of Environment,
Water and Natural Resources

CLLMM Program

Vision

Secure a future for the CLLMM site as a healthy, productive and resilient wetland that maintains its international importance

Management Actions (20)

- Vegetation Program: Lakebed Stabilisation, Fencing, Pest Management, Community Involvement, Aboriginal Heritage and Monitoring and Research
- Construction of Fishways, Critical Fish Habitat, Ruppia Translocation
- **Monitoring and Adaptive Management Framework**, Managing Acid Sulfate Soils, **Research Priorities**
- South East Flows Restoration, South Lagoon Salinity Reduction Scheme
- Community Engagement and Communications, Ngarrindjeri Partnerships, Meningie Wetland, Lake Albert Scoping Study

Outcomes (7)

1. Improved **ecological features** of the CLLMM Site to deliver a healthy and resilient wetland
2. CLLMM ecosystem **adapted to variable climate and variable water levels**
3. Environmental values that give the CLLMM wetland its **international significance protected**
4. CLLMM site **maintains salinity gradients** close to historic trends and an open Murray mouth
5. The **culture of the Ngarrindjeri is preserved and promoted** through partnerships and involvement
6. Local **communities** that depend on the health of the site are **supported** with a view to improving resilience
7. Capacity, knowledge and **understanding** are **increased** across communities

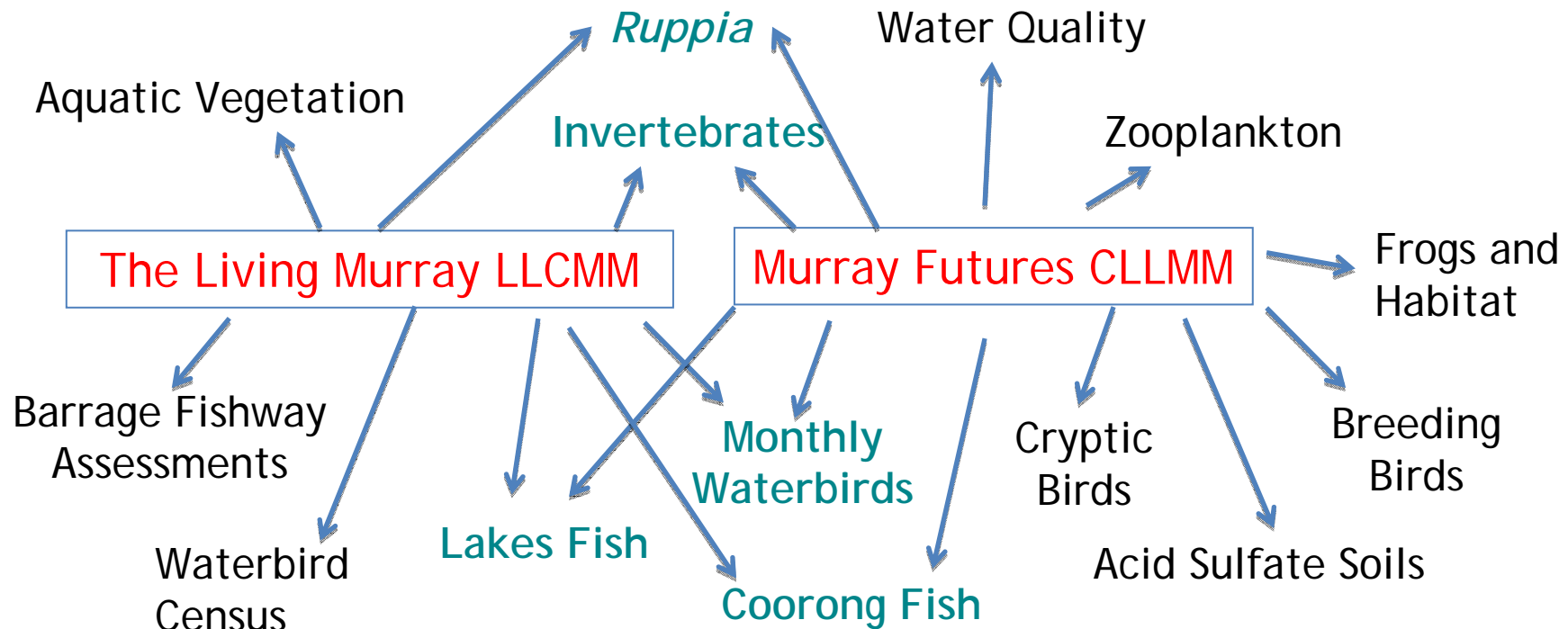


Government of South Australia

Department of Environment,
Water and Natural Resources



Collaborative Monitoring and Research Programs in the Lakes and Coorong



Government of South Australia
 Department of Environment,
 Water and Natural Resources





Contact

Adrienne Frears: adrienne.frears@sa.gov.au

Liz Barnett: liz.barnett@sa.gov.au



**Government
of South Australia**

Department of Environment,
Water and Natural Resources