

# Eastern Spencer Gulf Marine Park

Marine Park Sanctuary Zones over high use fishing areas (SAMPIT 2010)

137°12'0"E 137°18'0"E 137°24'0"E 137°30'0"E 137°36'0"E

34°12'0"S

34°18'0"S

34°24'0"S

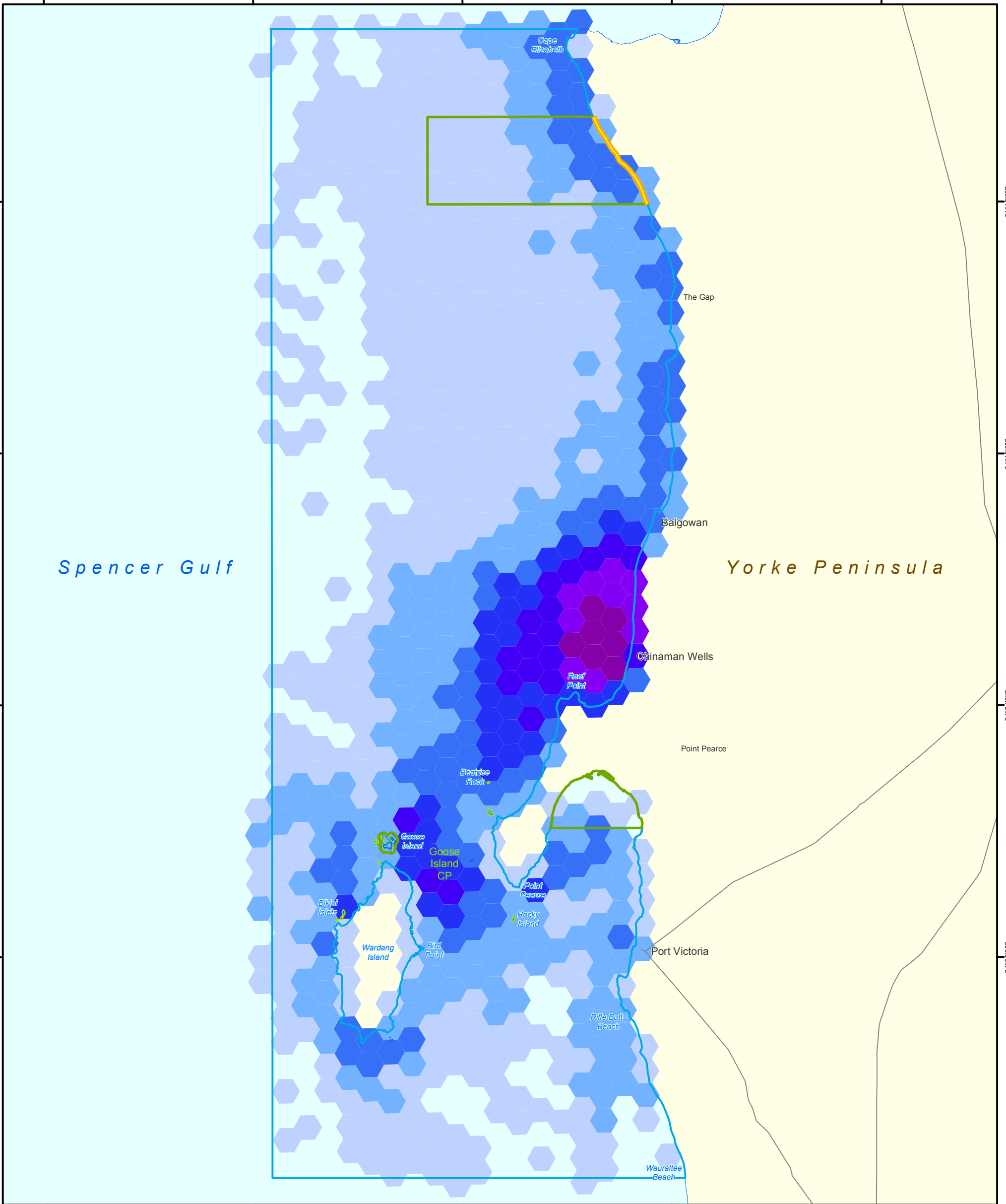
34°30'0"S

34°12'0"S

34°18'0"S

34°24'0"S

34°30'0"S



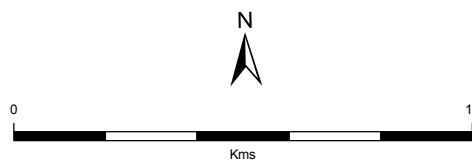
Spencer Gulf

Yorke Peninsula

137°12'0"E 137°18'0"E 137°24'0"E 137°30'0"E 137°36'0"E



- |  |  |
|--|--|
| <ul style="list-style-type: none"> <li>Low Fishing Effort</li> <li>Medium Fishing Effort</li> <li>High Fishing Effort</li> </ul> | <ul style="list-style-type: none"> <li>NPWSA Reserve</li> <li>Aquatic Reserve</li> <li>Sanctuary Zone</li> <li>Marine Park</li> <li>Special Purpose Area (shore-based recreational line fishing allowed)</li> <li>Major Road</li> <li>Coastline (median high watermark)</li> </ul> |
|--|--|



**Produced by** Science, Monitoring and Knowledge Branch for Marine Parks Project  
 Department of Environment, Water and Natural Resources  
 GPO Box 1047 Adelaide SA 5001  
[www.marineparks.sa.gov.au](http://www.marineparks.sa.gov.au)

**Data Source** Topographic, Marine Park, NPWSA Reserve, Marine Park Zoning, Special Purpose Area and SAMPIT 2010 data - DEWNR  
 Aquatic Reserve data - PIRSA

**Compiled** 28 January, 2014  
**Projection** Lambert Conformal Conic  
**Datum** Geocentric Datum of Australia, 1994

© Copyright Department of Environment, Water and Natural Resources 2014. All Rights Reserved. All works and information displayed are subject to Copyright. For the reproduction or publication beyond that permitted by the Copyright Act 1968 (Cwth) written permission must be sought from the Department. Although every effort has been made to ensure the accuracy of the information displayed, the Department, its agents, officers and employees make no representations, either express or implied, that the information displayed is accurate or fit for any purpose and expressly disclaims all liability for loss or damage arising from reliance upon the information displayed.

