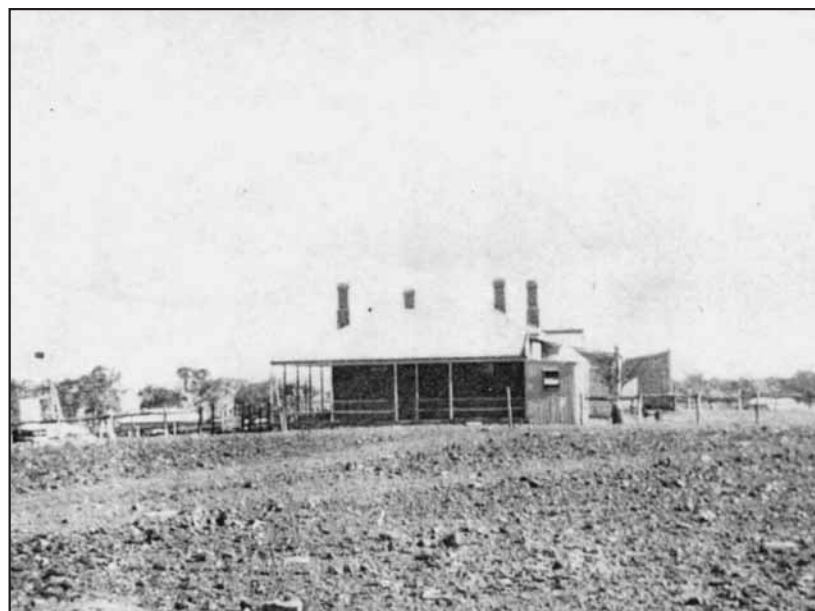


# Beltana Police Station

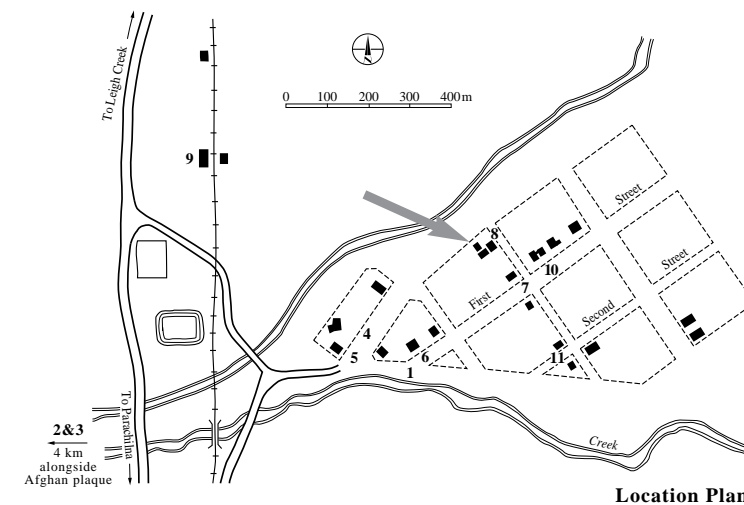
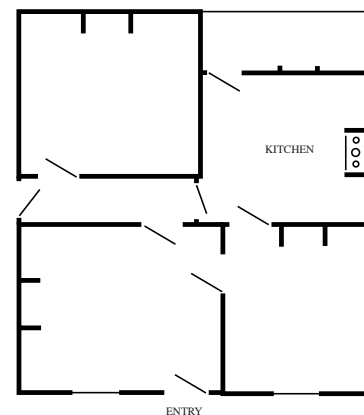
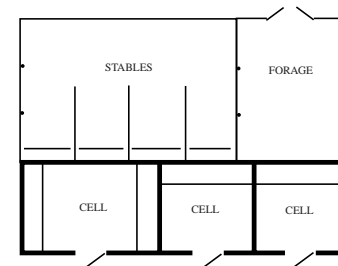
It was inevitable that Beltana would one day have a Police Station. With the beginning of construction of the "Great Northern Railway" in Port Augusta in 1878, a wave of line builders was rapidly heading north. As the building of the line progressed, the people in Beltana became nervous with reports of "rowdyism in the navvies' camps". Later, young men unsuccessfully seeking work, were sometimes stranded. Looting and pilfering was evident and a police presence was sought. In February 1879 Police Trooper Henry Panton arrived with a horse, but there were no permanently built facilities. His work extended from Parachilna to Kopperamanna along the Birdsville Track. Tenders were called in the June 1879 Government Gazette "for the erection of Police Cottages and Cells etc at Beltana." By August 1881, just after the railway to Beltana was opened, the police buildings were ready for occupation, but Henry Panton was transferred to

Wilmington. He was replaced at Beltana by a Police Sergeant and two Mounted Constables. The original stone building was maintained in its original state apart from the addition of a verandah around three sides in 1910. However, over the years various timber framed, weatherboard clad rooms were added and changed at the rear of the building. Cyril Allen, Beltana's last policeman, officially closed this office in February 1958. Since then, police supervision for the Beltana area has been undertaken from the Leigh Creek Police Station. In 1982 new occupants, Graham and Glenys Aird, completed renovations and restored the original stables and fodder store behind the police cells. Glenys is a descendant of Trooper Catchlove who was resident in about 1896.

This property is now privately owned.



*The Police Station building c.1930*



Location Plan



The Beltana Sport & Social Progress Association  
and the Beltana Memorial Committee  
Supported by the Commonwealth



Heritage South Australia  
Government of South Australia