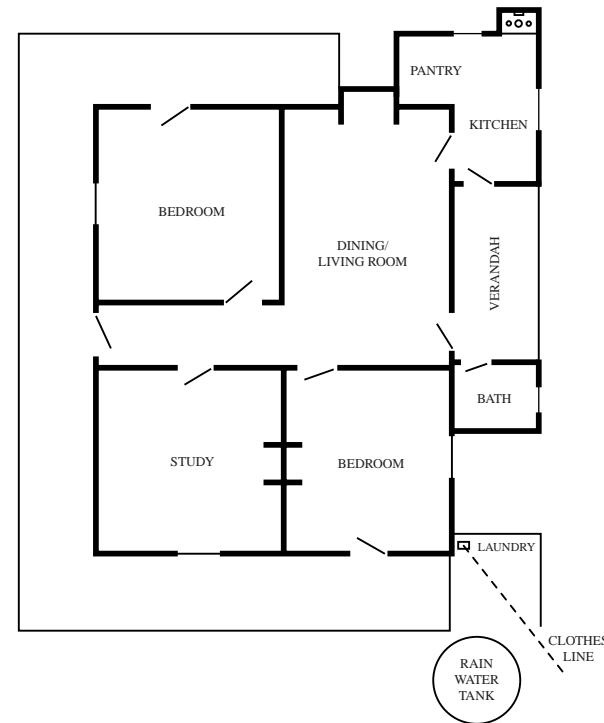


# Presbyterian Manse 1912-1932

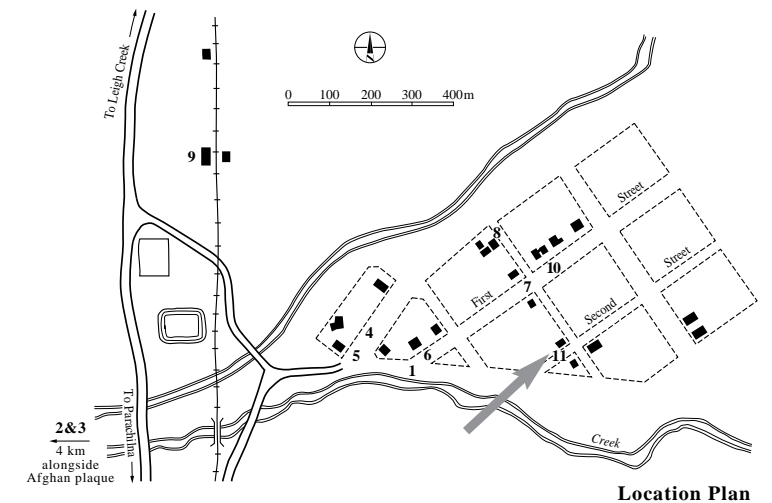
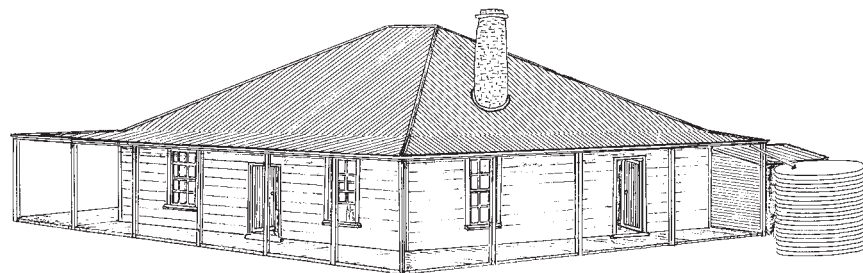
Christian missionaries were moving through the pastoral districts soon after the pastoral leases were taken up. In the 1860s, Lutheran missionaries called annually at Beltana Station on their journeys between the Barossa Valley and Kopperamanna on the Birdsville Track. The Reverend John Parker Butfield (father of Felix who later was a storekeeper in Beltana), also a magistrate and the Protector of Aborigines, served throughout this district. There were many others of various denominations who travelled through the north, conducting services, weddings and baptisms.

In March 1894 the Rev Robert Mitchell was the first minister to be permanently stationed at Beltana. The area served by these missionaries ranged from Parachilna to Marree and from Tarcoola to the New South Wales border. Earlier patrol padres had gone as far north as Oodnadatta and beyond. The aim was to visit every person in this area at least once a year. Besides taking a Christian message to the homes, the visit of the minister might have included a lesson for the children, assisting them with any school work, and help with any manual jobs needing to be done at the time, even pulling teeth. The visits were always appreciated. No missionary was appointed to live at Beltana after 1932 and the area was then served from Port Augusta. This is now private property.



*Rev. John Flynn c.1911*

*Rev. Robert Mitchell (far left) c.1917*



**Location Plan**



The Beltana Sport & Social Progress Association  
and the Beltana Memorial Committee  
Supported by the Commonwealth



Heritage South Australia  
Government of South Australia